

**State of Wyoming Corner Record**

(In compliance with the *CORNER PERPETUATION AND FILING ACT*, Wyoming Statutes, 1977, Section 36-11-101, et. seq., and the Rules and Regulations of the Board of Registration for Professional Engineers and Professional Land Surveyors)

Reverse side of this form may be used if more space is needed.

Record of original survey and citation of source of historical information (if corner is lost or obliterated). Description of corner monumentation evidence found and/or monument and accessories established to perpetuate the location of this corner. Sketch of relative location of monument, accessories, and reference points with course and distance to adjacent corner(s) (if determined in this survey). Method and rationale for reestablishment of lost or obliterated corner.

**G.L.O. Notes:** U.S. Deputy Surveyor, Henry G. Hay, September 26, 1870; Set Granite Boulder 18 x 12 x 10 for Cor to Sec's 19, 20, 29, 30.

**Found:** Lying loose in a East/West fence line, a 8"x8"x13" pink colored marked granite stone. Based upon my field survey to found undisturbed original 1/4 corner monuments to the North, South, East and West, I computed the double proportionate position of the corner. Upon returning to the field and executing a diligent search, I found within 1' of the proportionate position the original location of the monument. The original location was indicated by a very distinct depression in the ground and a hole filled in with soft soil and two small pink colored granite stone fragments from the original stone. Also evident and further witnessing the original position was slight depressions indicating pits NW/NE/SW and SE of the original corner.

**Set:** At the corner point, I set a 2 1/2" x 30" galvanized iron pipe with a 3 1/4" Brass Cap, 26" in the ground. Buried the original monument as a memorial along the south side. Set a 5' steel fence post witness 1' north.

See back of this sheet for ties to adjacent monuments.

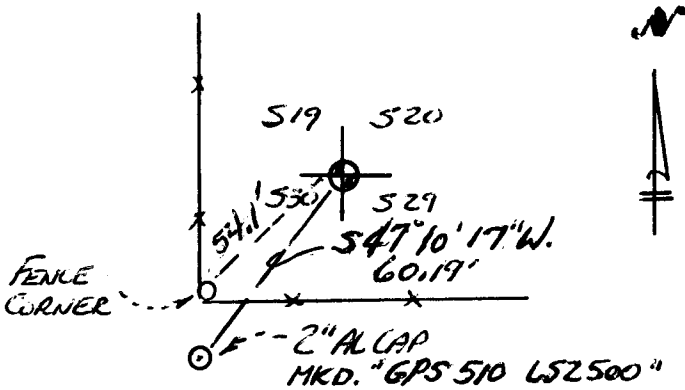
Brass Cap Markings

T.15N. R.66W.

S19	S20
S30	S29
1996	
PLS 2927	

LARAMIE COUNTY CLERK  
CHEYENNE, WY.  
'96 PRR 1 PM 12 14

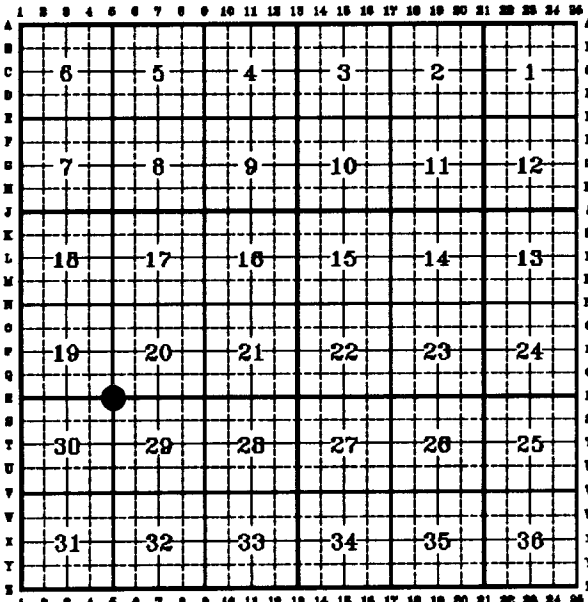
178470



Sketched Reference Point Ties To Corner

Date of Field Work: Feb. 14, 1996 Office Reference: Job No. 2-1930.95

**CROSS INDEX DIAGRAM**



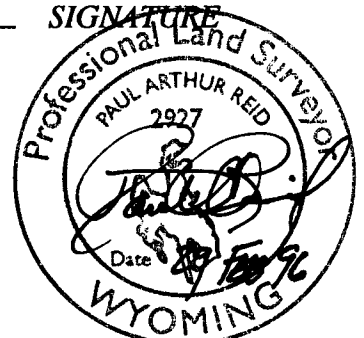
Firm/Agency, Address

Paul A. Reid, A.V.I.p.c.  
2035 Westland Road  
Cheyenne, WY 82001

Telephone Number:  
(307)-634-6017

This corner record was prepared by me or under my direction and supervision.

SEAL & SIGNATURE



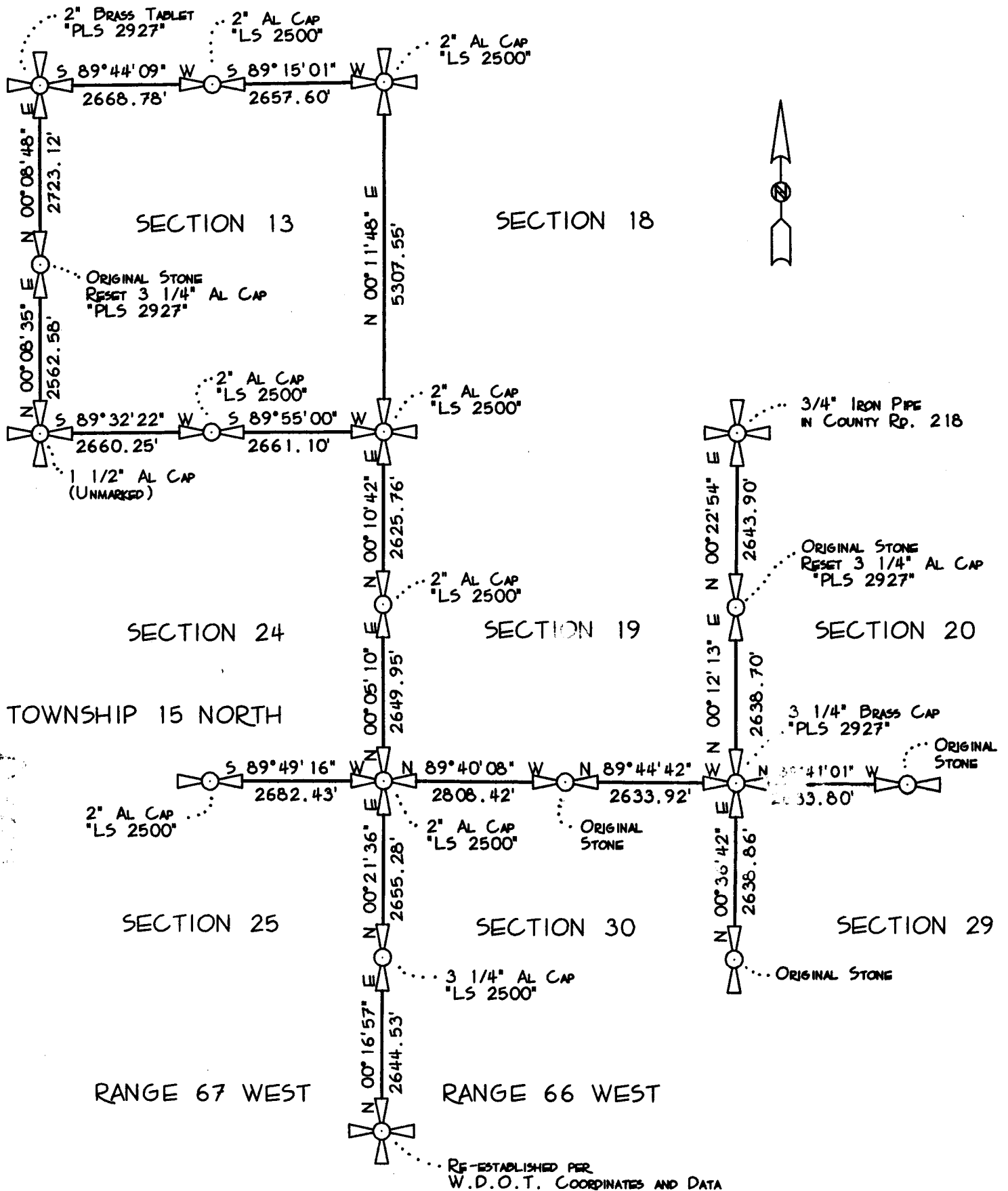
Corner Name: SE Corner Section: 19 T 15N R 66W; 6TH P.M. Cross-Index No.: R-5

SBRPEPLS/PLSW: March 1994

300K 1418

1361

BASIS OF BEARINGS: BEARINGS ARE GRID AND BASED UPON THE USE OF THE TRIMBLE GPS TOTAL STATION SYSTEM AND WGS 84 DATUM. THE ORIGIN BEING LOCATED @ A LOCAL CONTROL POINT BEING A 1 1/2" ALUMINUM CAP MARKED "CP WARREN" AT 41°15'28.68311"N LATITUDE AND 104°49'23.61968"W LONGITUDE AND BEING APPROXIMATELY 1,320' SOUTH AND 1340' EAST OF THE NW CORNER OF SECTION 19, T. 15N., R. 66W., 6TH P.M.



SCALE 1" = 2000'